



Pannelli in truciolare impiallacciato e controbilanciato liscio disponibili in una vasta gamma di essenze, anche in versione grezza.

### CARATTERISTICHE STRUTTURALI

#### STRUTTURA

Pannello in truciolare impiallacciato e controbilanciato.

#### VERNICIATURA

Essenza: è preventivamente sottoposto a tinteggiatura di uniformazione, è finito con vernice poliuretanica trasparente satinata. Laccate: il pannello è laccato con vernice poliuretanica satinata.

I rivestimenti lisci per interni non sono finestrabili.

*Smooth veneered chipboard panels matching on both sides, available in a wide range of wood type, also in the unfinished version.*

### STRUCTURAL FEATURES

#### STRUCTURE

*Veneered and counterbalanced chipboard panel.*

#### VARNISHING

*If in wood: the panel previously undergoes an evening painting treatment and is finished with clear satin polyurethane varnish. If lacquered: the panel is lacquered with satin polyurethane varnish.*

*The smooth panelling for interiors cannot be glazed.*



Truciolare impiallacciato e controbilanciato  
Veneered and counterbalanced chipboard



**SCEGLI LA FINITURA**  
SELECT THE FINISH



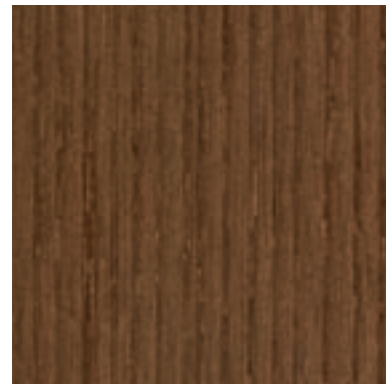
Acero  
Maple  
Codice 260 E



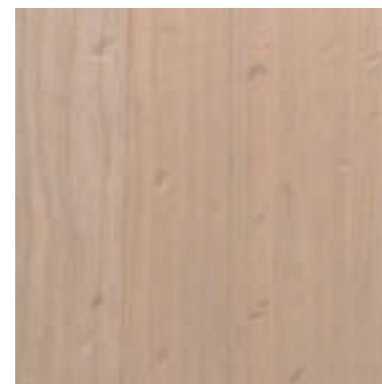
Castagno grezzo  
Untreated chestnut  
Codice 03P E



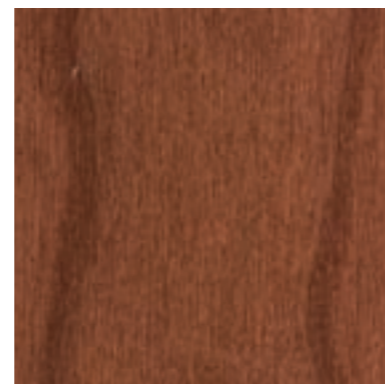
Castagno naturale  
Natural chestnut  
Codice 295 E



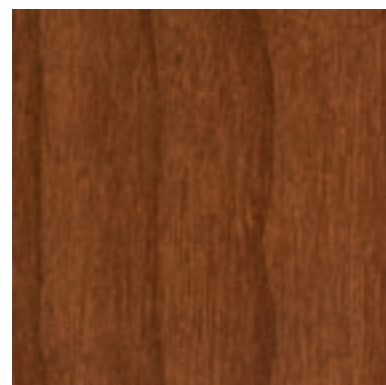
Castagno tinto  
Stained chestnut  
Codice 396 E



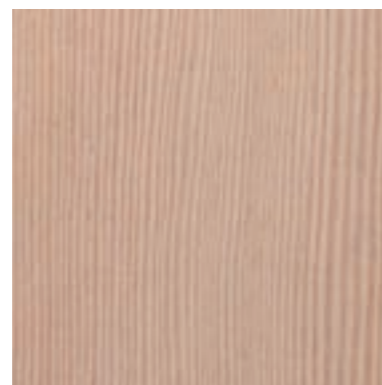
Ciliegio grezzo  
Untreated cherry  
Codice 03L E



Ciliegio tinto  
Stained cherry  
Codice 195 E



Ciliegio tinto standard  
Stained cherry  
Codice 267 E

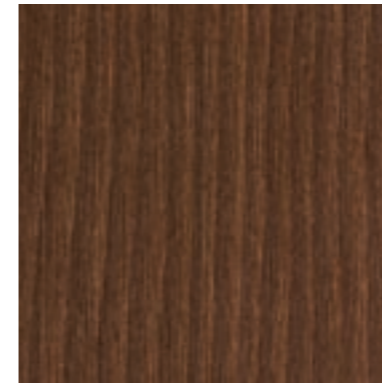


Douglas grezzo  
Untreated douglas  
Codice 03R E



Douglas naturale  
Natural douglas  
Codice 146 E

**SCEGLI LA FINITURA**  
SELECT THE FINISH



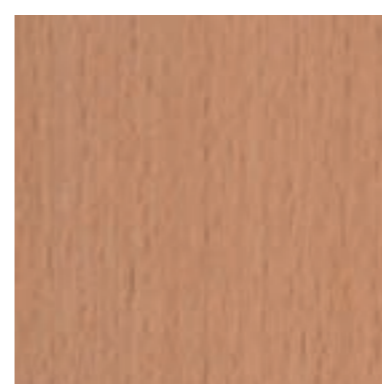
Douglas tinto  
Stained douglas  
Codice 147 E



Faggio crudo  
Crude beech  
Codice 02U E



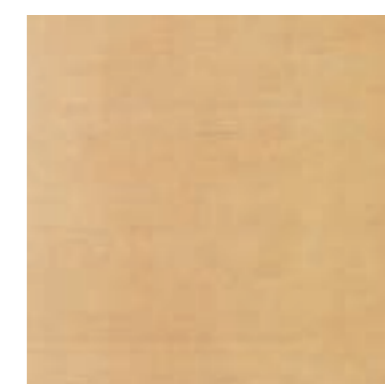
Faggio evaporato  
Evaporated beech  
Codice 02S E



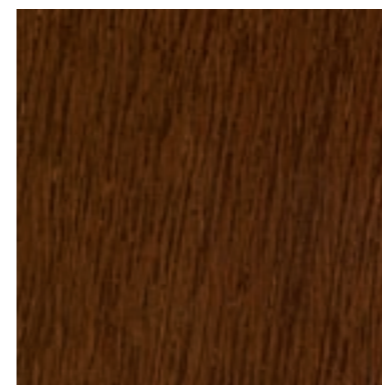
Faggio semievaporato  
Semi-evaporated beech  
Codice 02T E



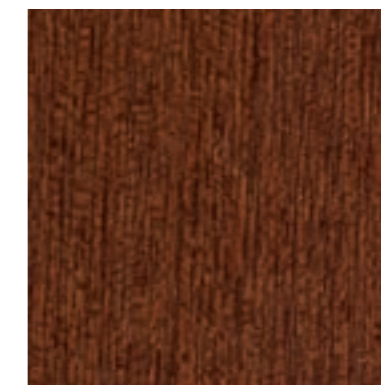
Faggio naturale  
Natural beech  
Codice 268 E



Frassino naturale  
Natural ash  
Codice 269 E



Iroko tinto  
Stained iroko  
Codice 03F E

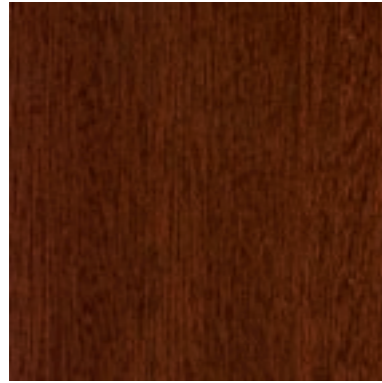


Iroko naturale  
Natural iroko  
Codice 03G E



Iroko grezzo  
Untreated iroko  
Codice 03H E

**SCEGLI LA FINITURA**  
SELECT THE FINISH



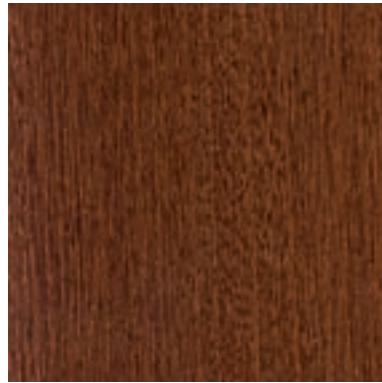
Mogano medio  
Medium mahogany  
Codice 527 E



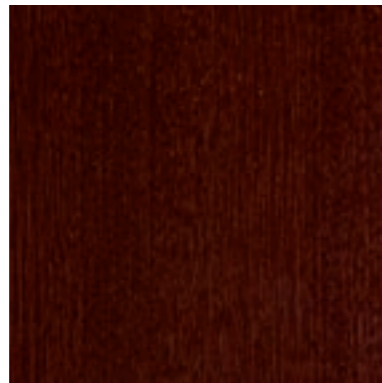
Mogano naturale  
Natural mahogany  
Codice 204 E



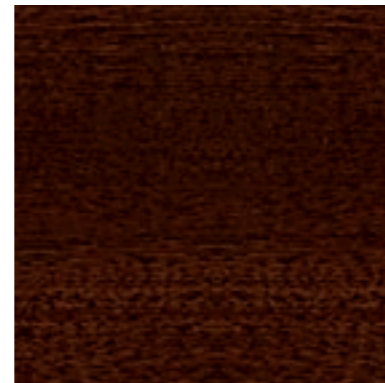
Mogano naturale lucido  
Polished natural mahogany  
Codice 205 E



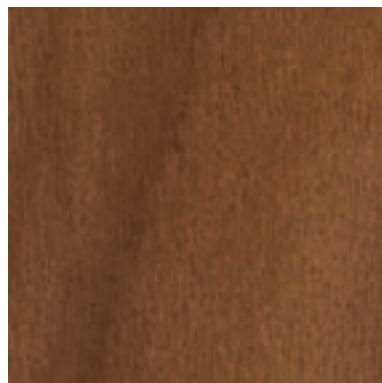
Mogano naturale scuro  
Dark natural mahogany  
Codice 01L E



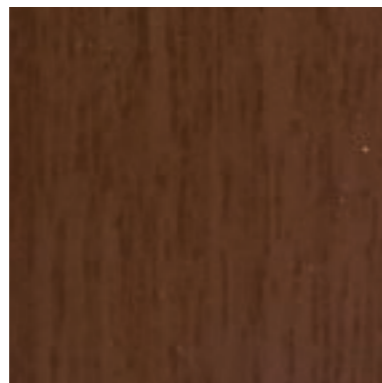
Mogano tinto  
Stained mahogany  
Codice 004 E



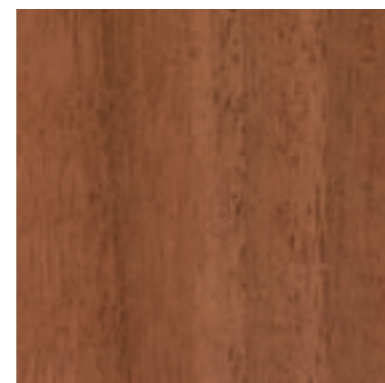
Mogano tinto lucido  
Polished stained mahogany  
Codice 389 E



Noce biondo  
Blond walnut  
Codice 02B E



Noce Mansonia tinto (Decor print)  
Stained Mansonian walnut (Decor print)  
Codice 150 E



Noce nazionale giuntato  
Spliced Italian walnut  
Codice 560 E

**SCEGLI LA FINITURA**  
SELECT THE FINISH



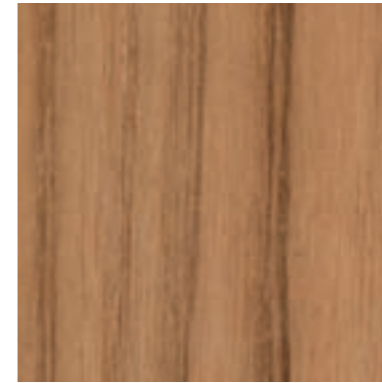
Noce nazionale medio scuro  
Medium dark Italian walnut  
Codice 029 E



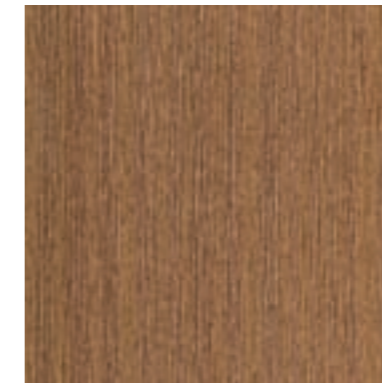
Noce nazionale grezzo  
Untreated Italian walnut  
Codice 03N E



Noce satiné tinto  
Stained satin walnut  
Codice 02H E



Olmo tinto  
Stained elm  
Codice 264 E



Pino tinto  
Stained pine  
Codice 145 E



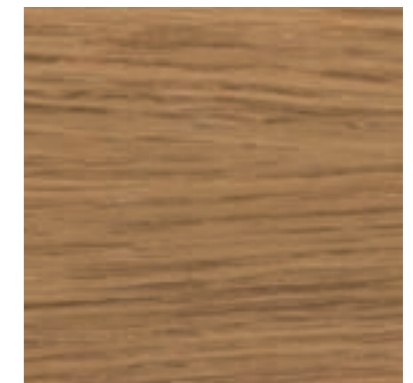
Pino naturale  
Natural pine  
Codice 144 E



Pino grezzo  
Untreated pine  
Codice 03M E



Rovere biondo  
Blond oak  
Codice 02C E

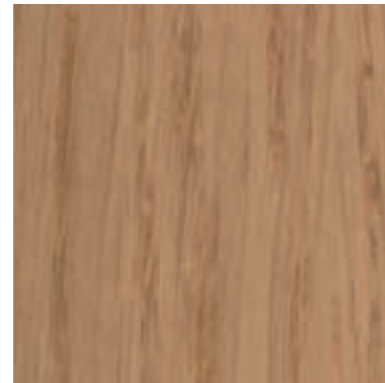


Rovere biondo con venature orizzontali  
Blond oak with horizontal grain  
Codice 367 E

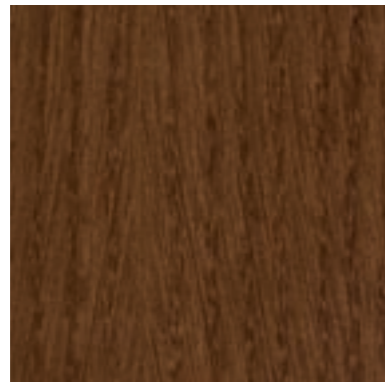
**SCEGLI LA FINITURA**  
SELECT THE FINISH



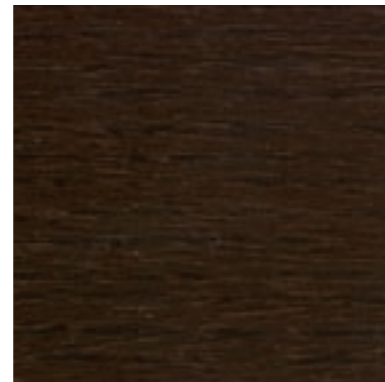
Rovere medio  
Medium oak  
Codice 027 E



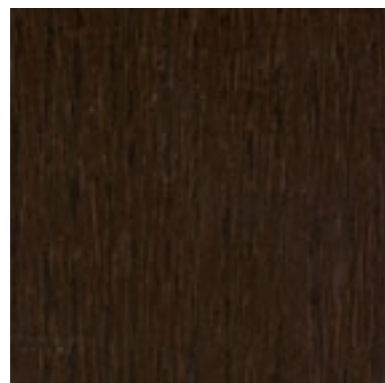
Rovere chiaro  
Light oak  
Codice 046 E



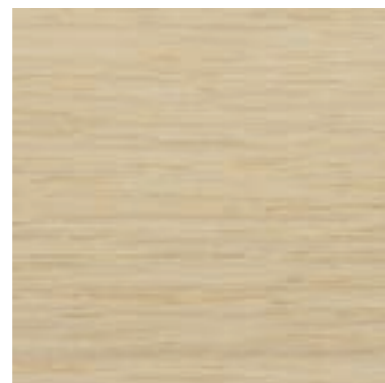
Rovere tinto scuro  
Dark colour stained oak  
Codice 388 E



Rovere tinto wengé venature orizzontali  
Wengé stained oak with horizontal grain  
Codice 060 E

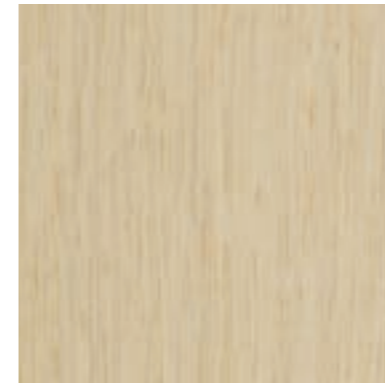


Rovere tinto wengé venature verticali  
Wengé stained oak with vertical grain  
Codice 061 E

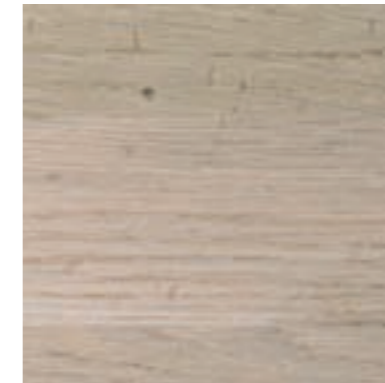


Rovere sbiancato venature orizzontali  
Bleached oak with horizontal grain  
Codice 062 E

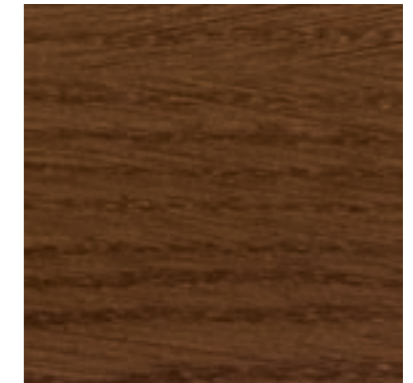
**SCEGLI LA FINITURA**  
SELECT THE FINISH



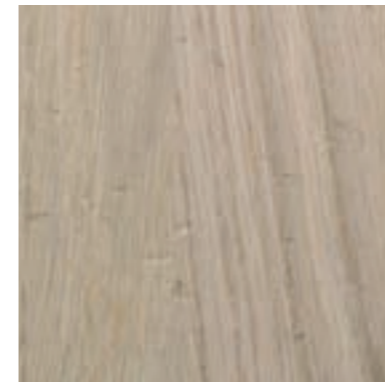
Rovere sbiancato venature verticali  
Bleached oak with vertical grain  
Codice 063 E



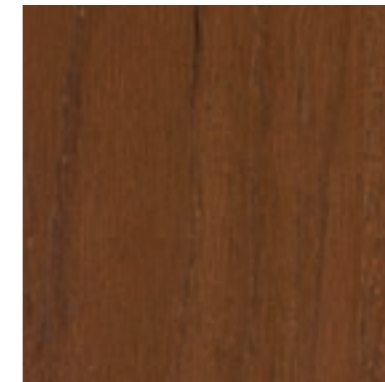
Rovere grezzo con venature orizzontali  
Untreated oak with horizontal grain  
Codice 312 E



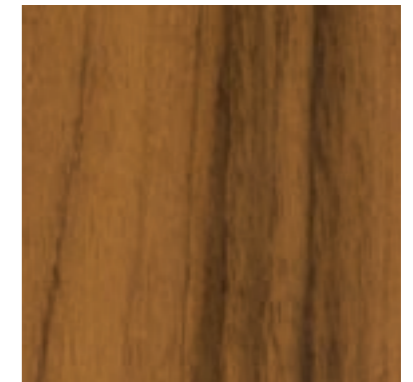
Rovere tinto scuro con venature orizzontali  
Dark colour stained oak with horizontal grain  
Codice 313 E



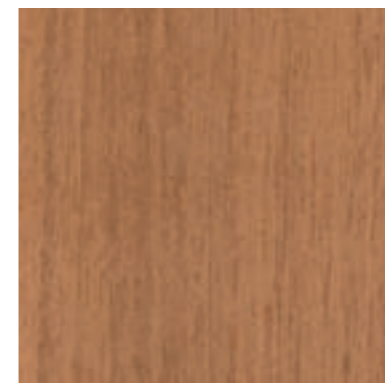
Rovere grezzo  
Untreated oak  
Codice 03Q E



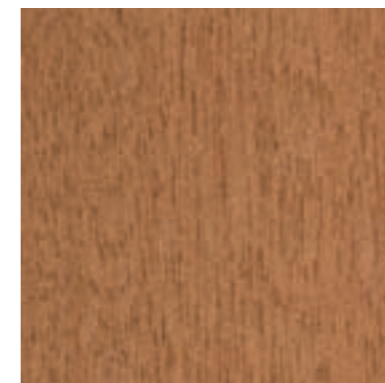
Teak tinto  
Stained teak  
Codice 534 E



Teak naturale  
Natural Teak  
Codice 535 E



Tanganica biondo  
Blond tanganika  
Codice 01F E



Tanganica medio biondo  
Medium blond tanganika  
Codice 191 E



Tanganica naturale  
Natural tanganika  
Codice 002 E

SCEGLI LA FINITURA  
SELECT THE FINISH



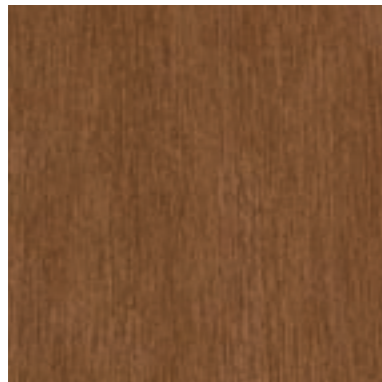
Tanganika biondo con venature orizzontali  
*Blond tanganika with horizontal grain*  
Codice 049 E



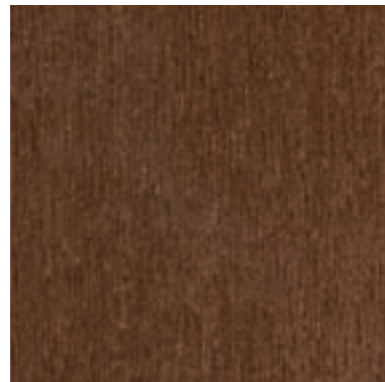
Tanganika naturale con venature orizzontali  
*Natural tanganika with horizontal grain*  
Codice 048 E



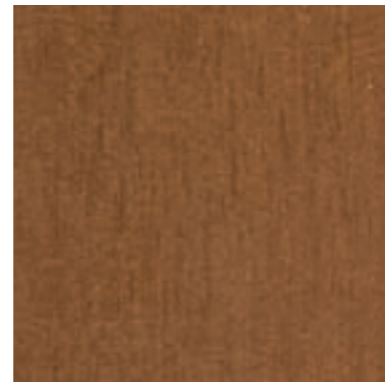
Tanganika medio chiaro  
*Medium light tanganika*  
Codice 01H E



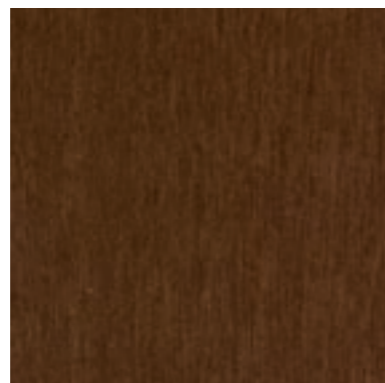
Tanganika medio invecchiato  
*Medium aged tanganika*  
Codice 190 E



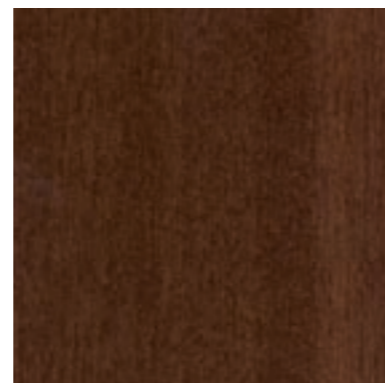
Tanganika medio scuro (ex tinto)  
*Medium dark tanganika (formerly stained)*  
Codice 01C E



Tanganika tinto medio  
*Medium tanganika*  
Codice 152 E

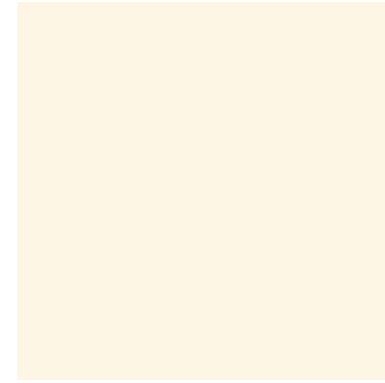


Tanganika tinto standard  
*Standard stained tanganika*  
Codice 001 E

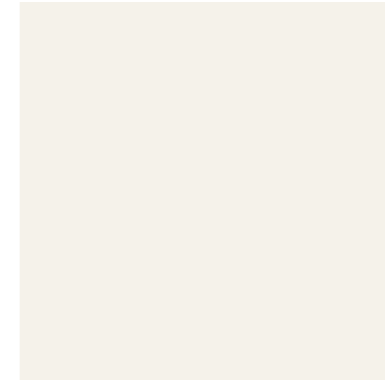


Tanganika tinto speciale scuro  
*Dark special stained tanganika*  
Codice 02A E

SCEGLI LA FINITURA  
SELECT THE FINISH



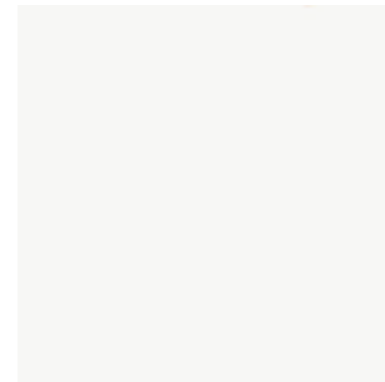
Laccato avorio  
*Lacquered ivory*  
Codice 03D E



Laccato bianco ghiaccio  
*Lacquered ice white*  
Codice 028 E



Laccato bianco neve  
*Lacquered snow white*  
Codice 03B E



Laccato bianco RAL 9010  
*Lacquered RAL 9010*  
Codice 129 E



Laccato verde  
*Lacquered green*  
Codice 115 E



Laccato verde chiaro  
*Lacquered light green*  
Codice 03C E



Laccato rosso  
*Lacquered red*  
Codice 292 E



Laccato nero  
*Lacquered black*  
Codice 291 E



Laccato RAL a scelta  
*Choice of RAL*



I Magic Wood sono realizzati mediante stampa a base acqua con effetto legno. Morbidezza e calore del legno unitamente a uniformità, resistenza e durata nel tempo

### **CARATTERISTICHE STRUTTURALI**

#### **STRUTTURA**

Il disegno è riprodotto su pannello a base MDF mediante rulli fotoincisi che eseguono un'applicazione di inchiostri mediante sincronizzazioni elettroniche.

#### **VERNICIATURA**

La verniciatura a base acqua. Vengono utilizzate le stesse vernici dei pannelli in legno in modo da ottenere la stessa morbidezza e lo stesso calore.

*The Magic Woods are water-based printed with wood effect. Smoothness and warmth of wood in conjunction with uniformity, strength and durability over time.*

### **STRUCTURAL FEATURES**

#### **STRUCTURE**

*The pattern is reproduced on an MDF-based panel with photoengraved rollers, which apply inks through electronical synchronization.*

#### **VARNISHING**

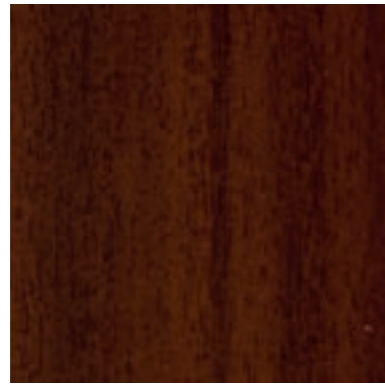
*Water-based painting. The same varnishes are used as for the wood panels to ensure the same smoothness and warmth.*



Truciolare impiallacciato e controbalanciato  
Veneered and counterbalanced chipboard



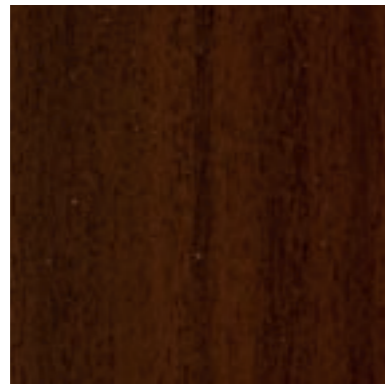
**SCEGLI LA FINITURA**  
SELECT THE FINISH



Mogano medio  
Medium mahogany  
Codice 499 S



Mogano naturale  
Natural mahogany  
Codice 498 S



Mogano tinto  
Stained mahogany  
Codice 497 S



Tanganika biondo  
Blond tanganika  
Codice 496 S

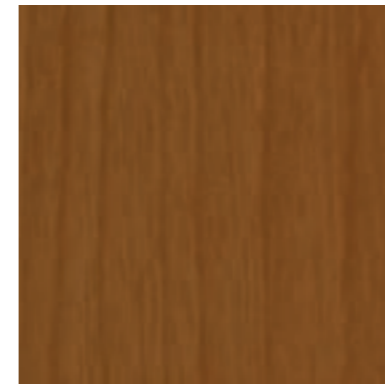
**SCEGLI LA FINITURA**  
SELECT THE FINISH



Tanganika medio  
Medium tanganika  
Codice 494 S



Tanganika medio chiaro  
Medium light tanganika  
Codice 493 S



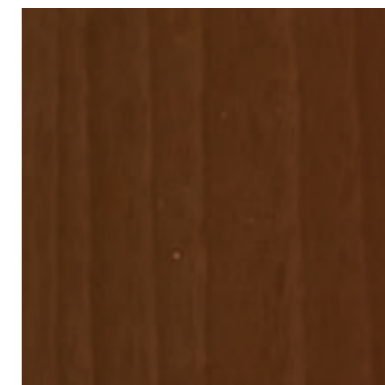
Tanganika medio invecchiato  
Medium aged tanganika  
Codice 492 S



Tanganika medio scuro  
Dark stained tanganika  
Codice 491 S



Tanganika naturale  
Natural tanganika  
Codice 495 S



Tanganika tinto standard  
Stained tanganika  
Codice 490 S

Le informazioni presenti in questo catalogo possono subire variazioni.  
I materiali rappresentati sono puramente indicativi; per la verifica dei colori si rimanda al campionario.  
*The information contained in this catalogue may undergo variations.*  
*The materials shown are a bare example; for the verification of colours please refer to the sample collection.*



DIERRE SPA  
STRADA STATALE PER CHERI 66/15  
14019 VILLANOVA D'ASTI (AT)  
TEL 0141.949411

[info@dierre.it](mailto:info@dierre.it)

[www.dierre.com](http://www.dierre.com)

THE ITALIAN STYLE DOOR



YOUR HOME, YOUR LIFE